



SPE/IADC 173103

Wellbore Tortuosity Analysed by a Novel Method May Help to Improve Drilling, Completion, and Production Operations

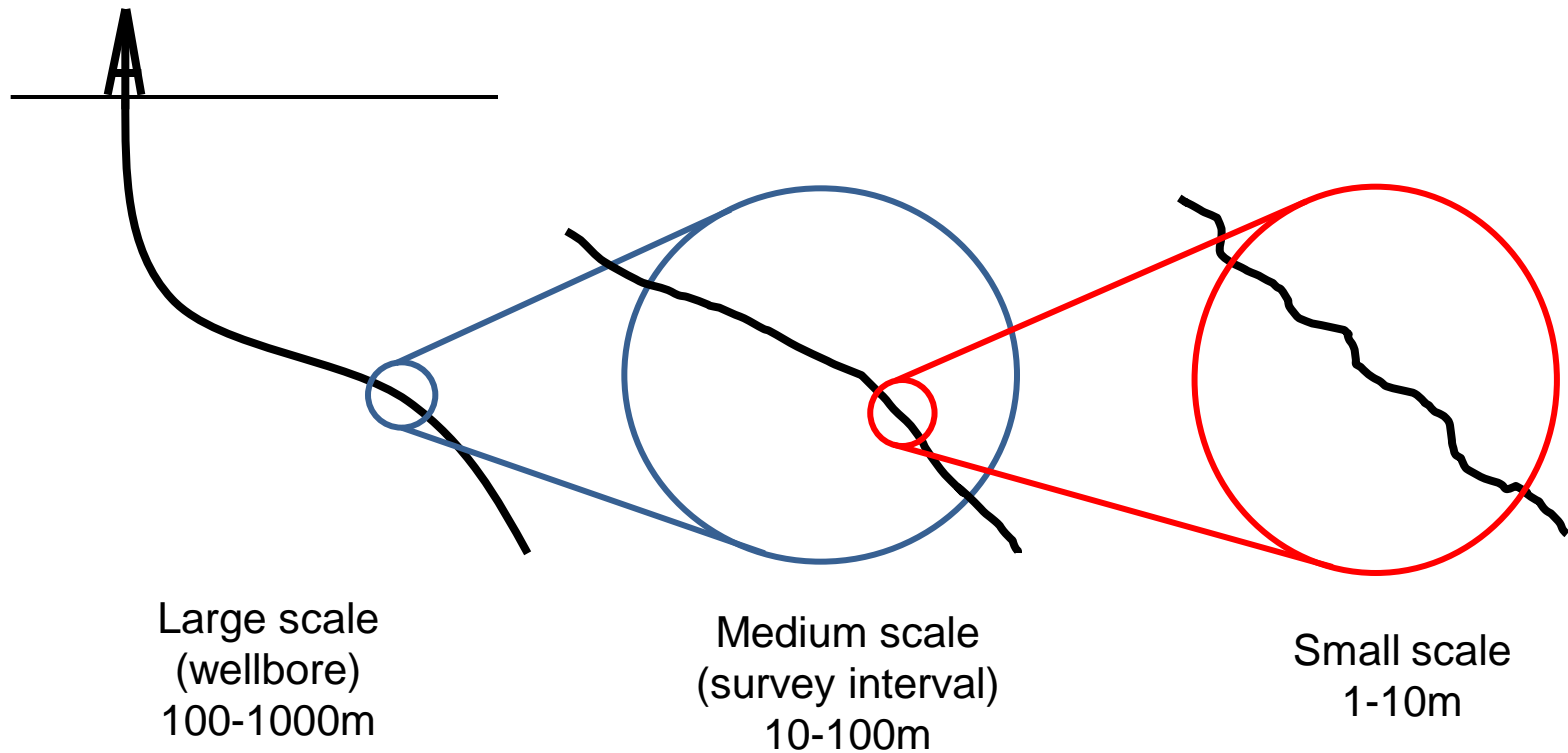
Jon Bang, Onyemelem Jegbefume, Adrián Ledroz, Gyrodata Inc.,
Jay Thompson, SandRidge Energy

Contents

- Background
- Description of analysis
- Examples of field results
- Conclusions

Background

Tortuosity = any deviation from straight hole
=> analysis of geometric shape

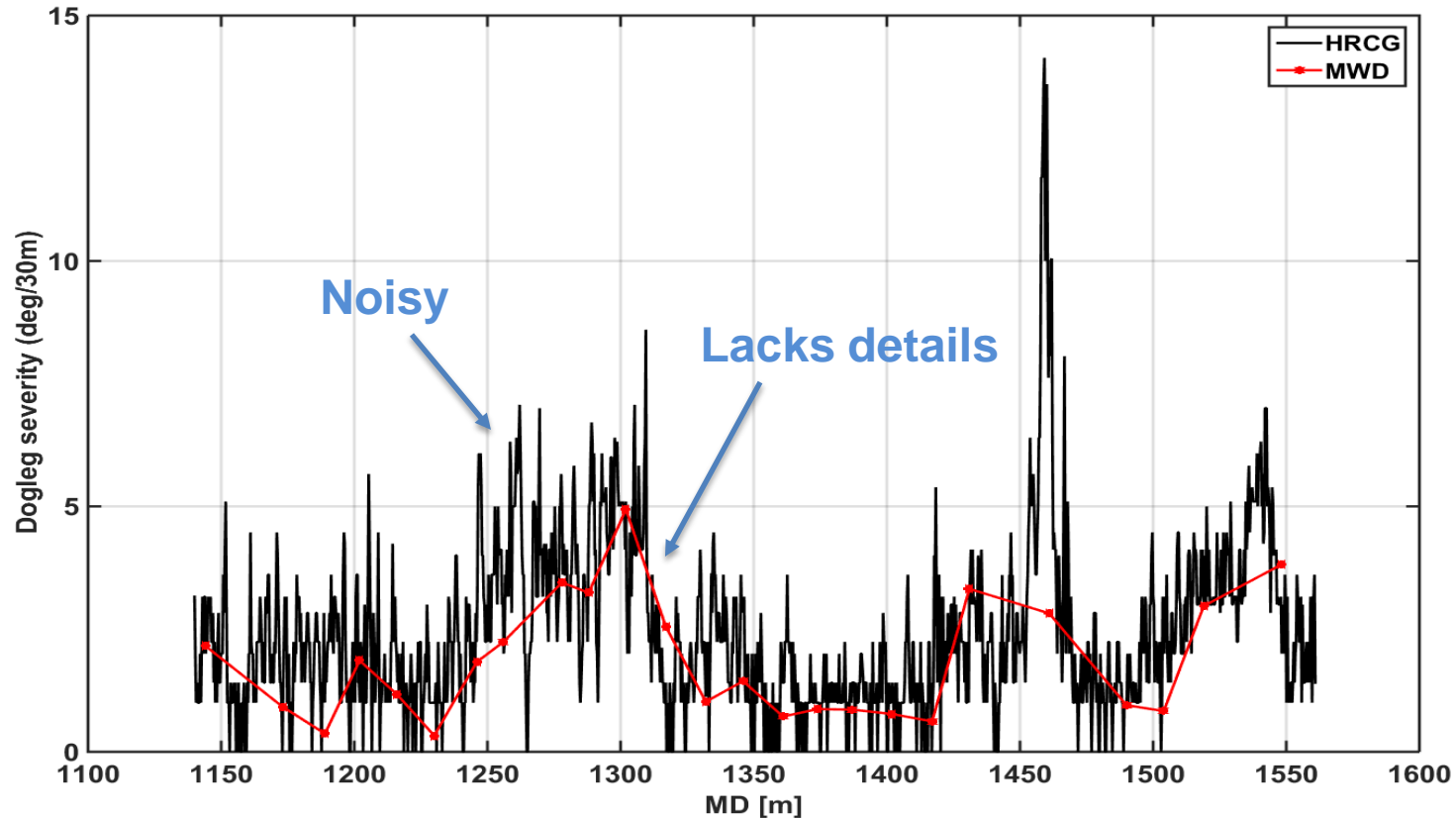


Medium and small scale tortuosity cause problems

	Drilling	Completion Production
High friction, high torque and drag	X	
Stuck equipment Drill pipe, casing, liner, compl&prod equipment	X	X
Reduced drilling length	X	
Excess bending, increased wear Casing, tubing, rods, rod guides	X	X
Damage, premature failure of equipment Electrical submersible pumps (ESP)	X	X

- Consequences:
- Increased energy consumption
 - Equipment failure
 - Increased work-over frequency
 - Loss of production
 - Increased costs, reduced profit

Dogleg severity – not good enough



No simple way to «upscale» from short to long intervals

Novel tortuosity processing

Three output parameters, resolution $> \sim 1$ ft

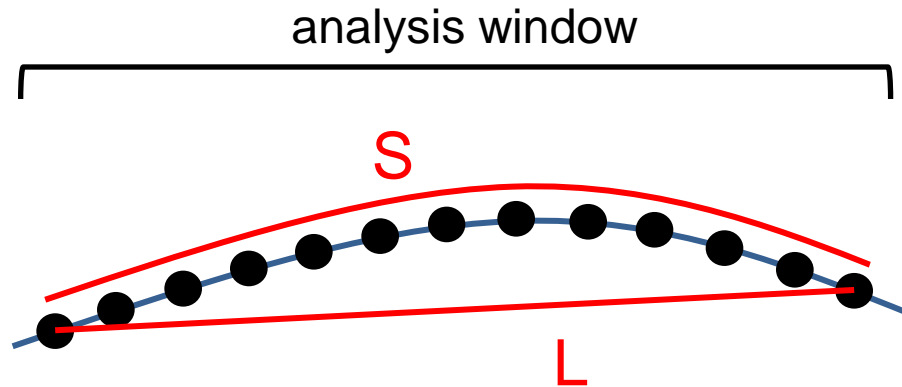
Input: High resolution survey data

- Continuous gyro; interval ~ 1 ft
- Standard survey operation
- Standard conversion to position co-ordinates

Single external parameter

- S = length of analysis window
= length of equipment (physical device)

1. Tortuosity parameter: T

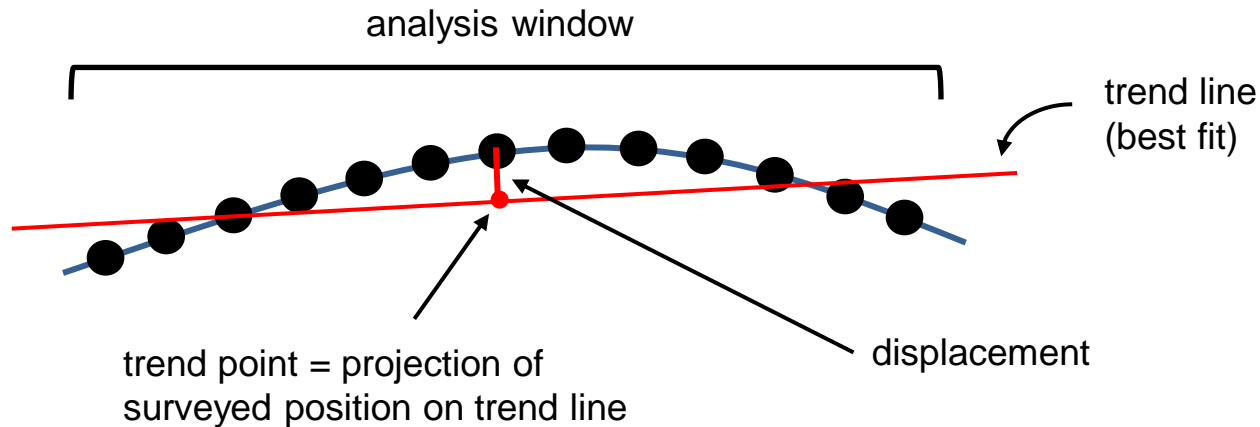


$$T = (S - L) / L$$

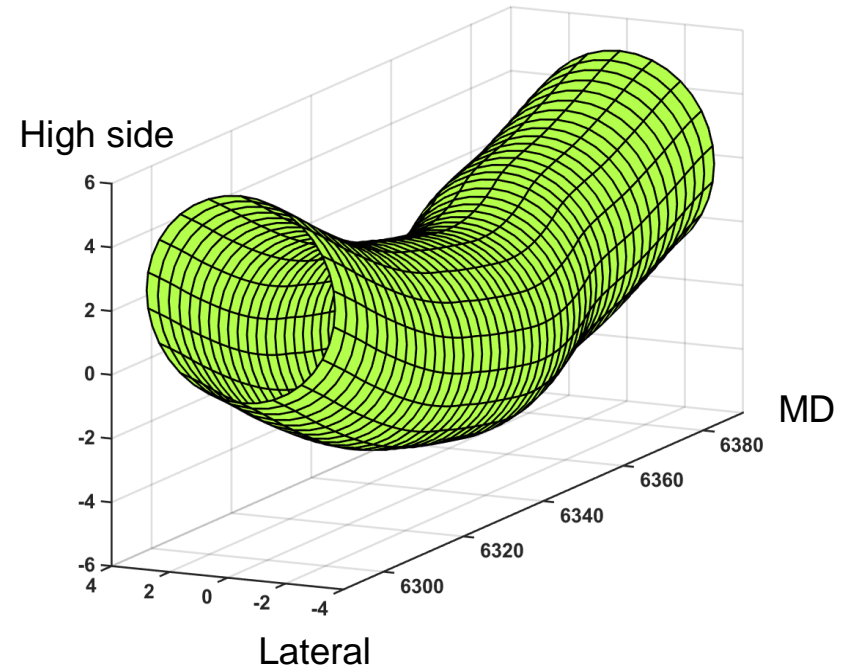
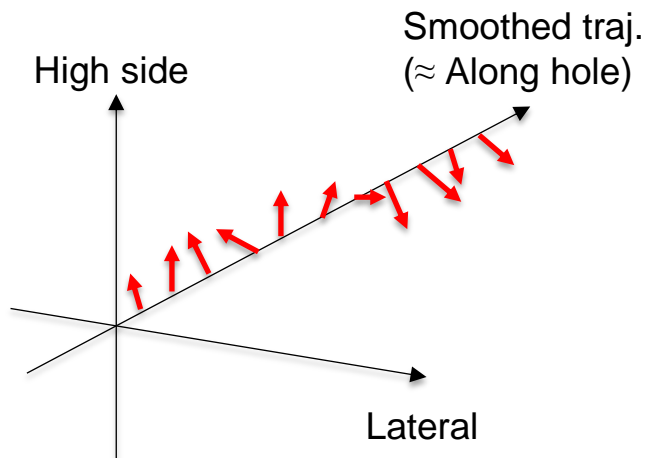
- S = along-hole distance = ΔMD
- L = straight line distance (end to end)
- T = relative elongation
= deviation from straight trajectory on length scale S
- T is typically within $[0 \dots 0.001]$

2. Trend + displacements

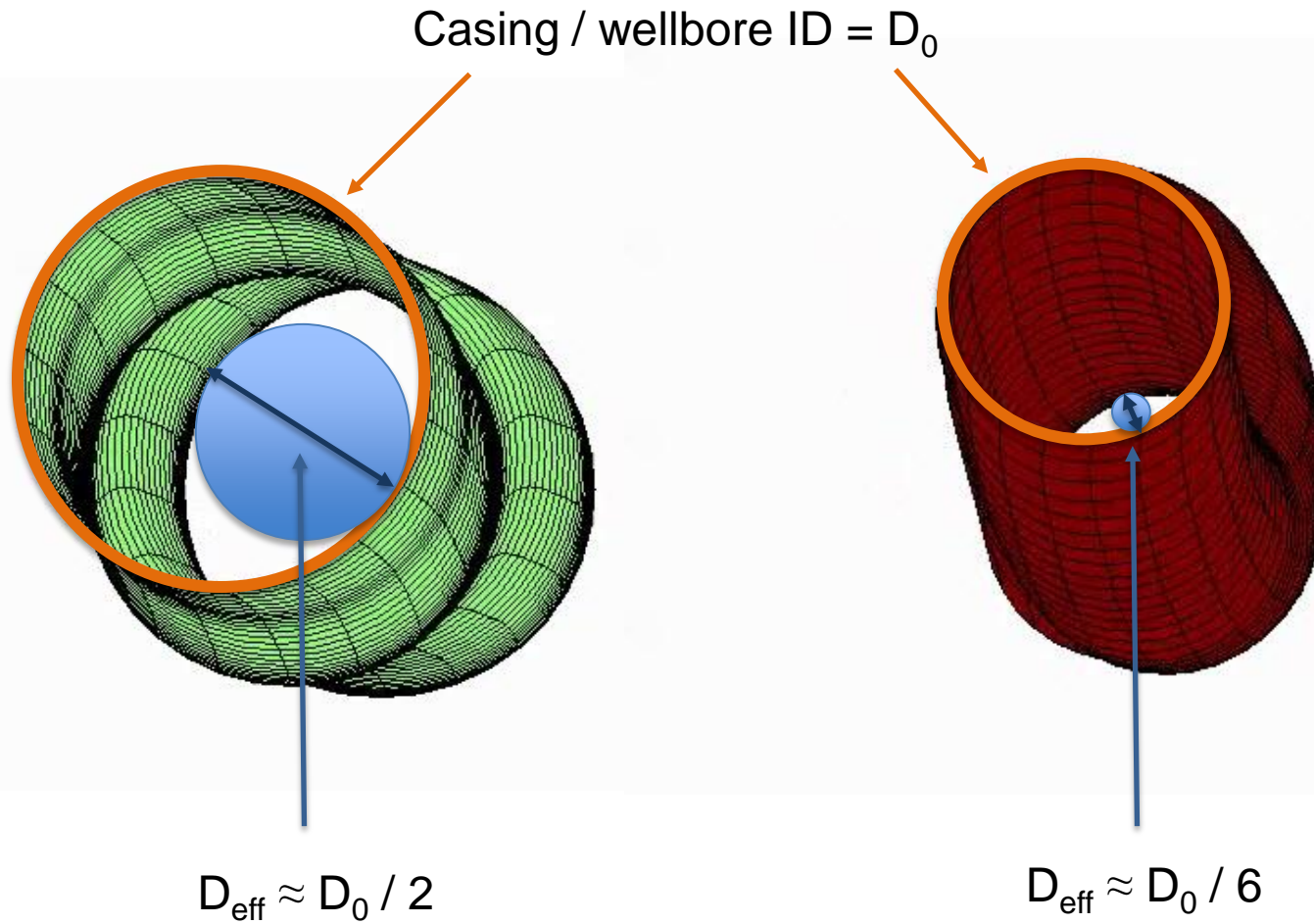
Surveyed positions = wellbore trend (smoothed trajectory)
+ transverse displacements



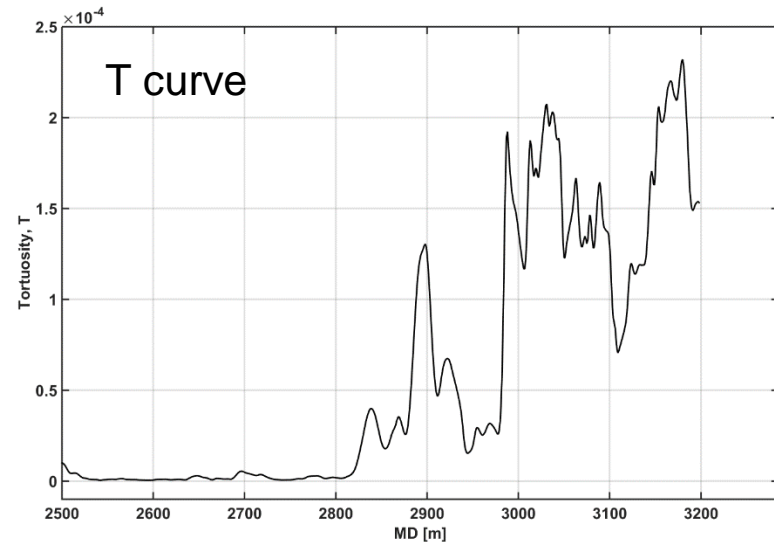
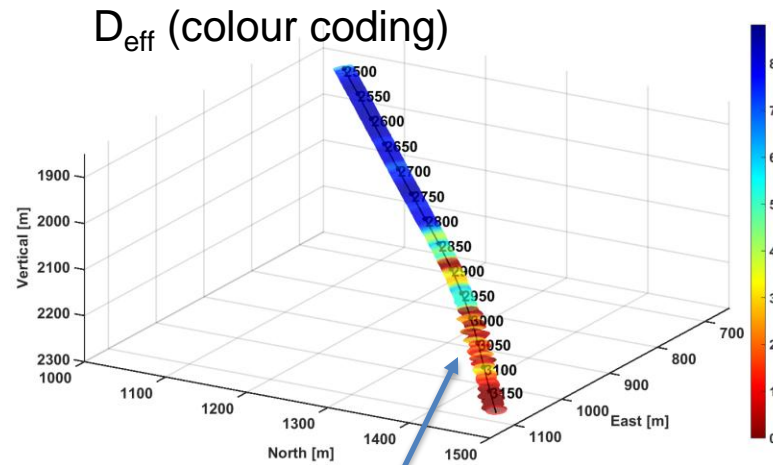
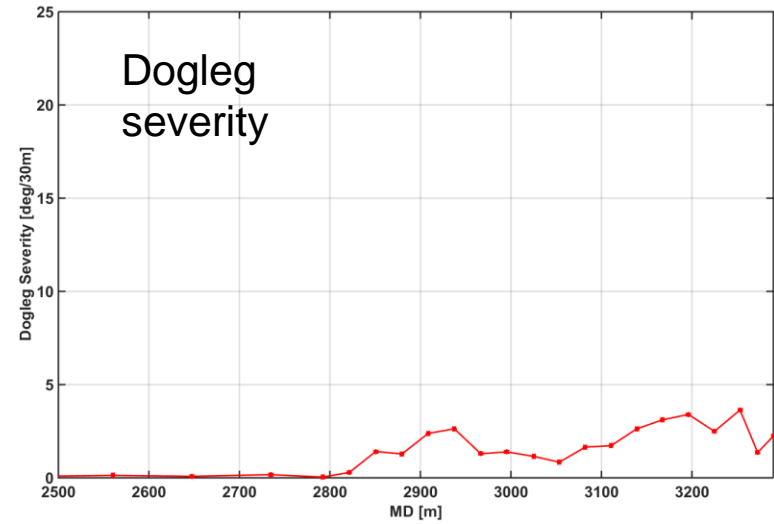
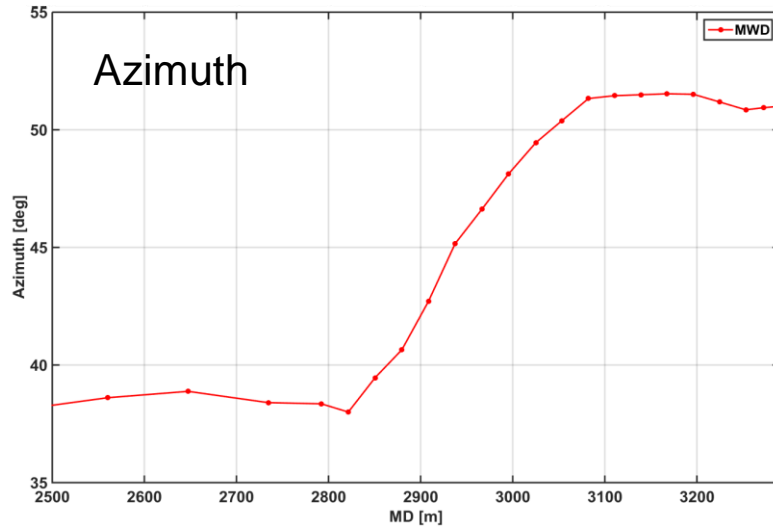
Trend + displacements



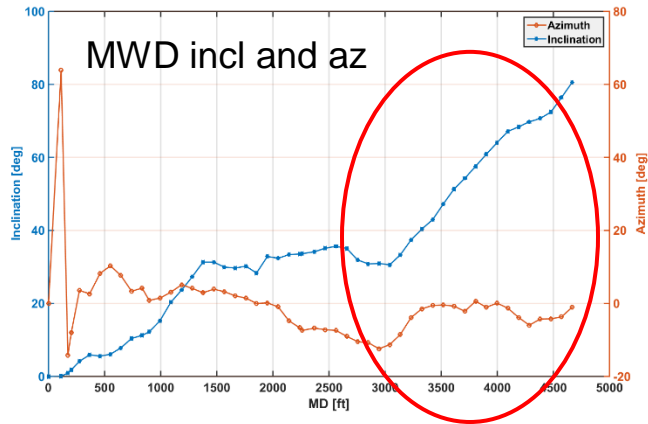
3. Effective diameter: D_{eff}



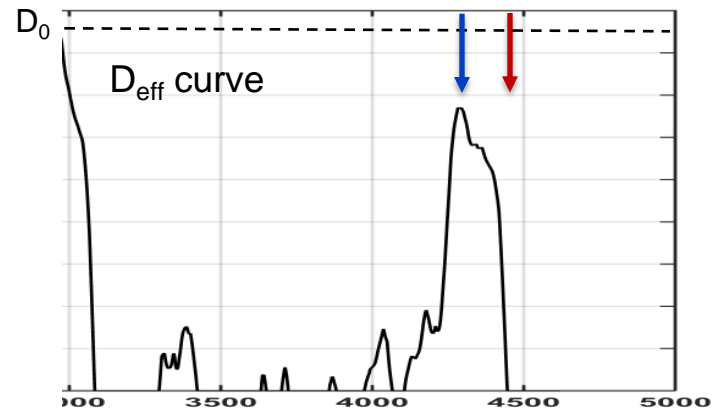
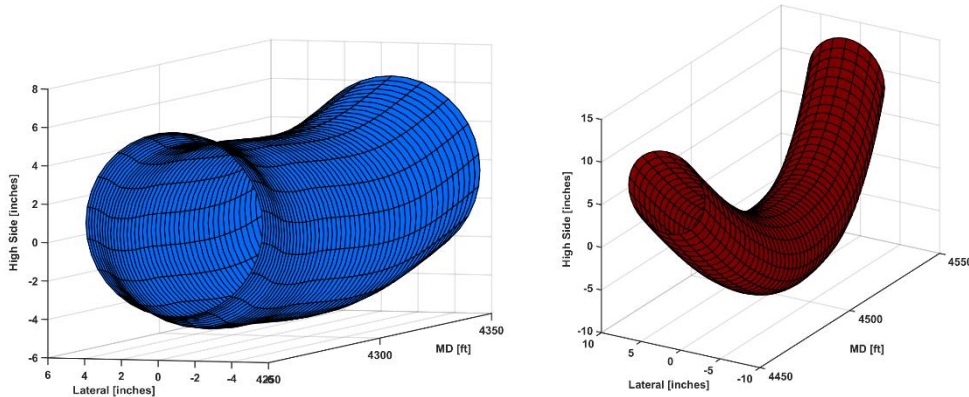
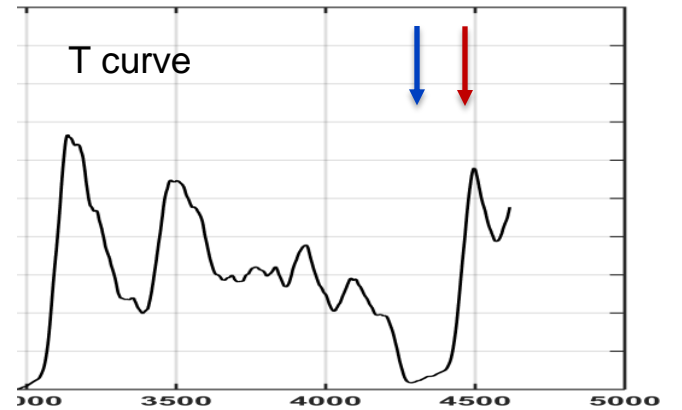
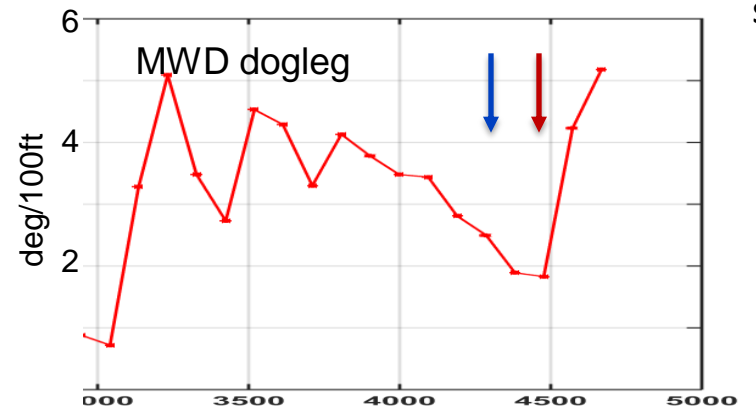
Field case 1: Stuck casing, pump failure



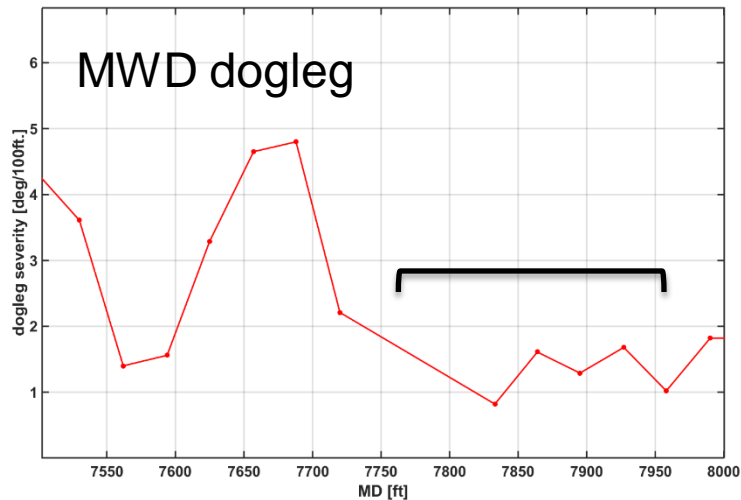
Field case 2: Pump placement



Pump length: 100 ft

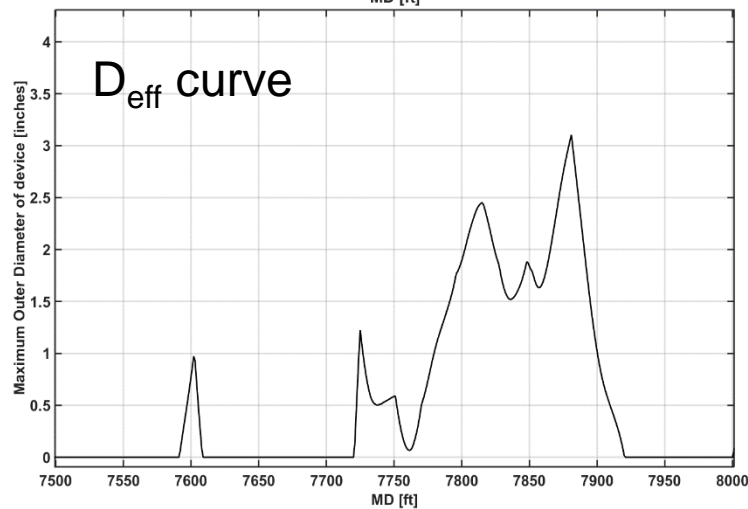


Field case 3: Pump placement



- Nominal ID = 6.28inches
- ESP (124ft / 4in) to be installed in horiz. section (below 7500ft)

← MWD dogleg suggests 7750-7950ft



← Maximum D for device length 124ft is 3.1in, at 7880ft.

- Pump size and location were reconsidered

Conclusions (1)

- New method for analysis of wellbore tortuosity
 - Three outputs: T, trend+displacements, D_{eff}
 - Single external parameter => device length
 - Intuitive interpretation of results
 - Improvement over existing Dogleg severity criterion
- Standard surveying procedure
 - High resolution data, survey interval ~1 ft
 - Continuous gyro survey

Conclusions (2)

- Applications
 - Drilling: Evaluation of bottom-hole assembly (BHA) and drilling process
 - Completion, Production: Optimal locations for equipment
 - Casing, completion equipment
 - Electrical submersible pumps (ESP)
 - Rod-guide, tubing sleeves for rod based surface pumps
- Benefits
 - Normal (i.e., within spec.) operating conditions and power consumption
 - Reduced wear, reduced failure rate
 - Reduced work-over frequency
 - Reduced idle time and production losses
 - Increased profit by reducing production costs

Acknowledgments

John Weston, Gyrodata
Rob Shoup, Gyrodata

Gyrodata Inc.

SandRidge Energy

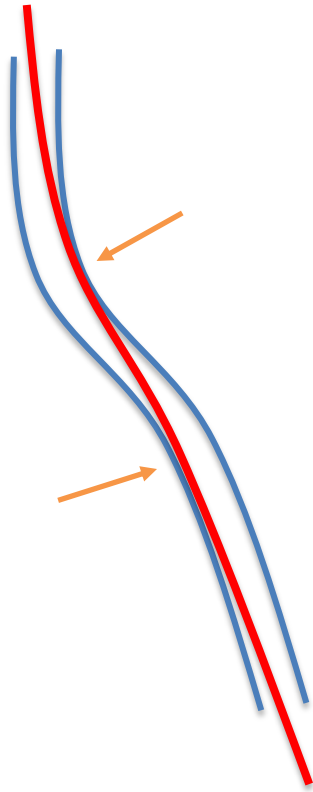
Thank you

Appendix

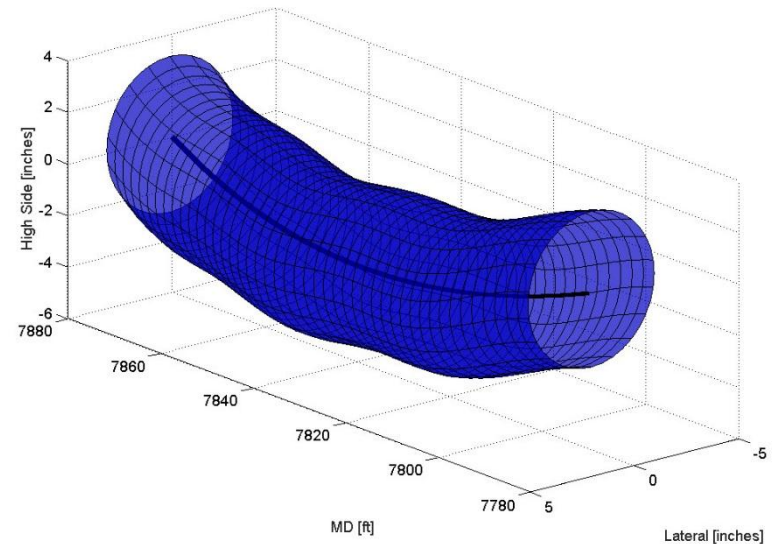
(in case of questions)

Further developments

Rod guide placement

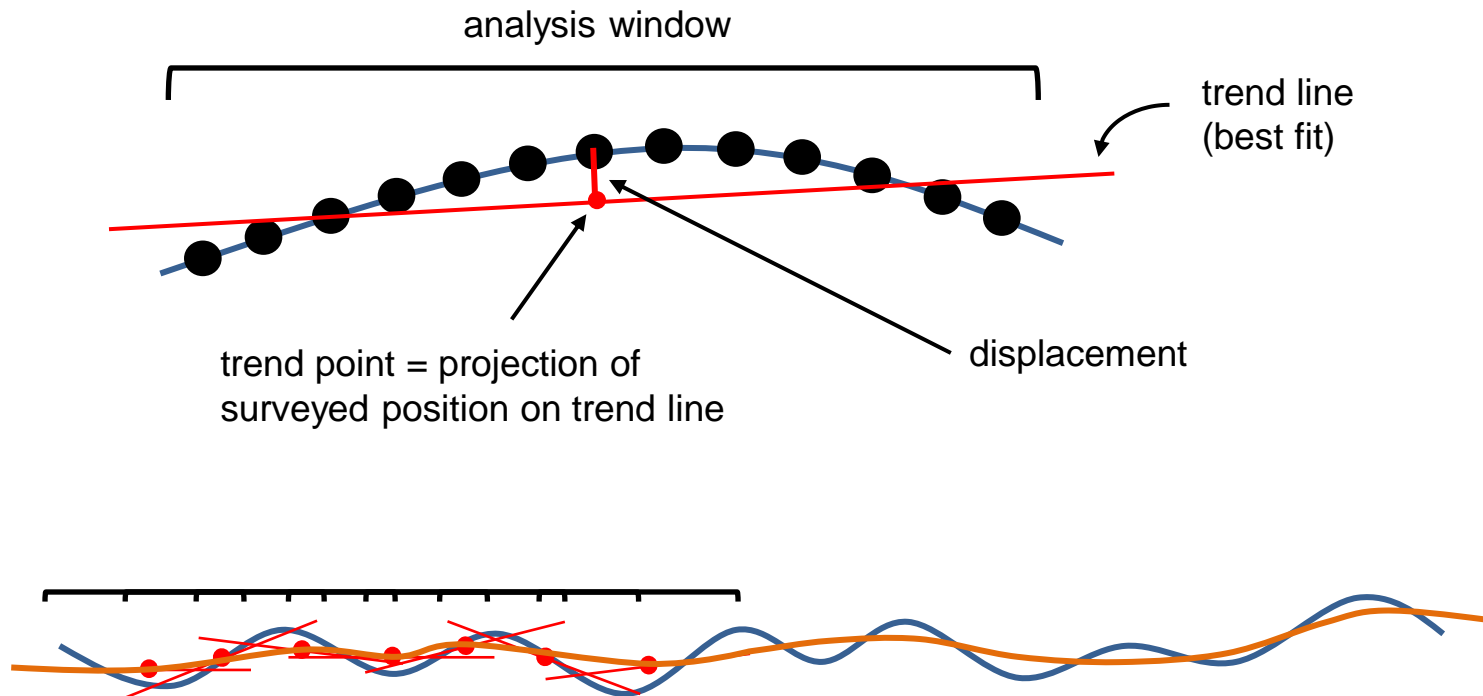


Permanent (acceptable)
bending of device



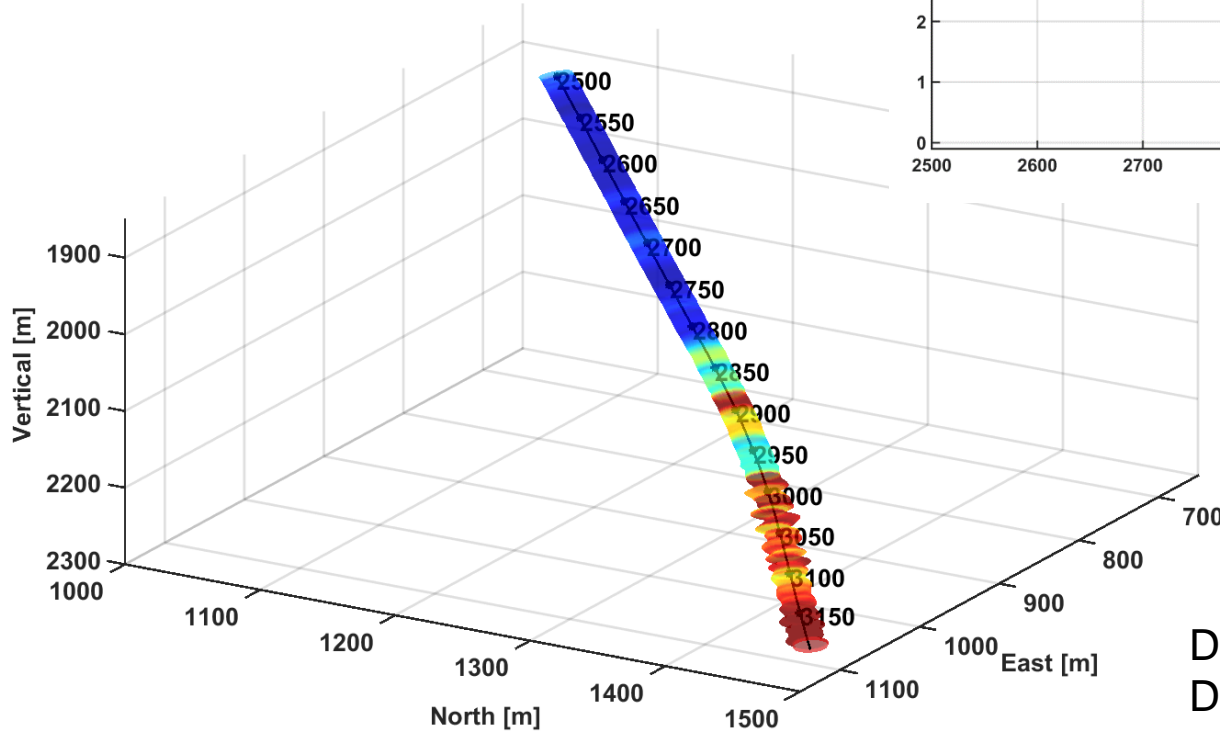
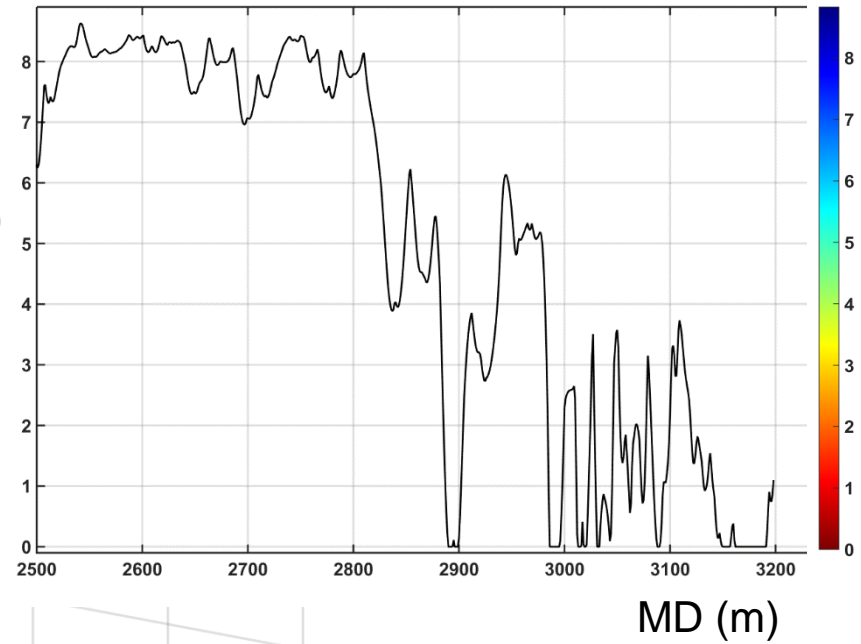
Local trend + displacements

Surveyed positions = wellbore trend (smoothed trajectory) + transverse displacements



D_{eff} versus depth

D_{eff} (in)

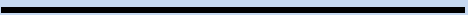


Displacements x100;
D_{eff} shown by colour coding

Tortuosity result parameters

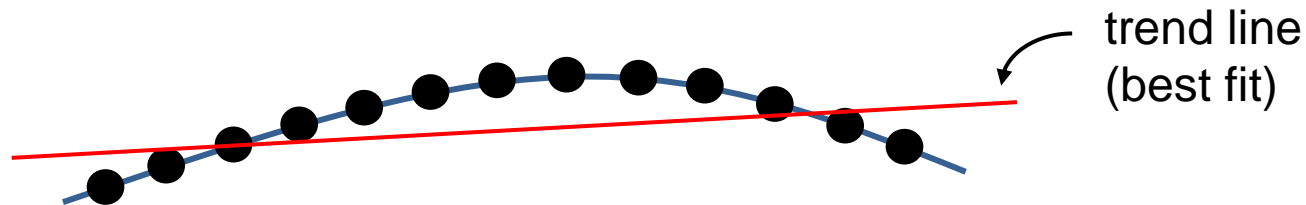
	No tortuosity	Low tortuosity	High tortuosity
T (= relative elongation)	0	near 0	«large»
Transverse displacements	0	small	«large»
D_{eff} (= effective diameter)	D_0	near D_0	small ($\rightarrow 0$)

D_{eff} and T are appr. complementary

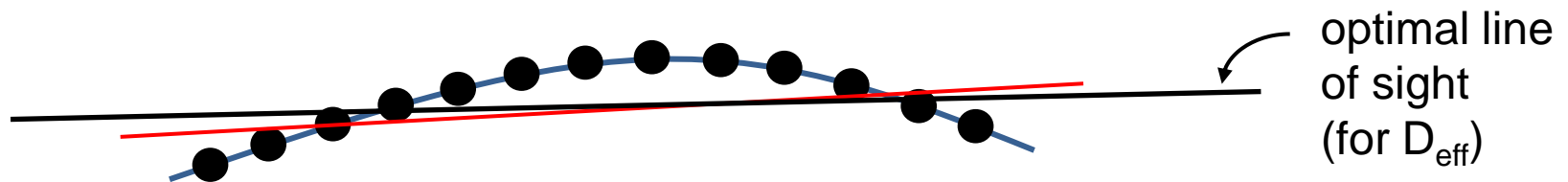
Wellbore shape (local)	Relative elongation $T = (S-L) / L$	Displacement span	Effective diameter D_{eff}
	0	0	D_0 (= max.)

D_{eff} : Trend line vs. line of sight

Trend line = least squares fit; displacements are «evenly» distributed around trend line



Optimal line of sight may differ slightly (~ 0.1 deg.) from trend line; requires small adjustment calculation



Single external parameter: S

S = length of analysis window (along MD)

- Window must cover $>\sim 10$ survey stations
- User-defined
- Interpretation: S = tortuosity length scale
 \approx length of device